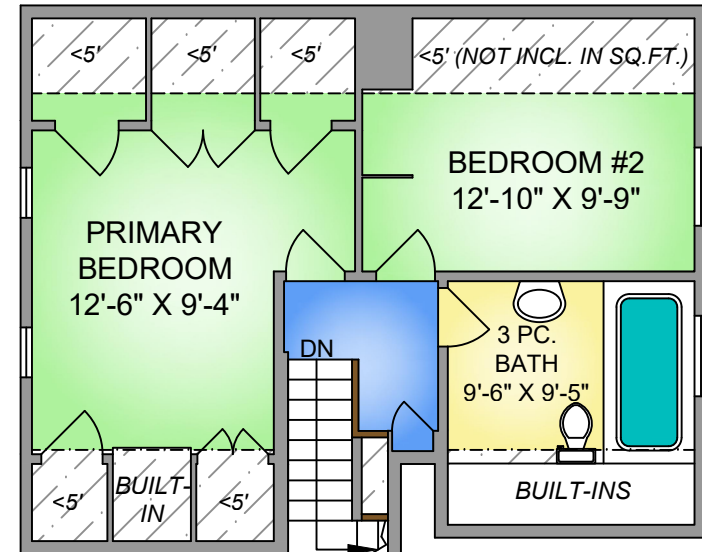
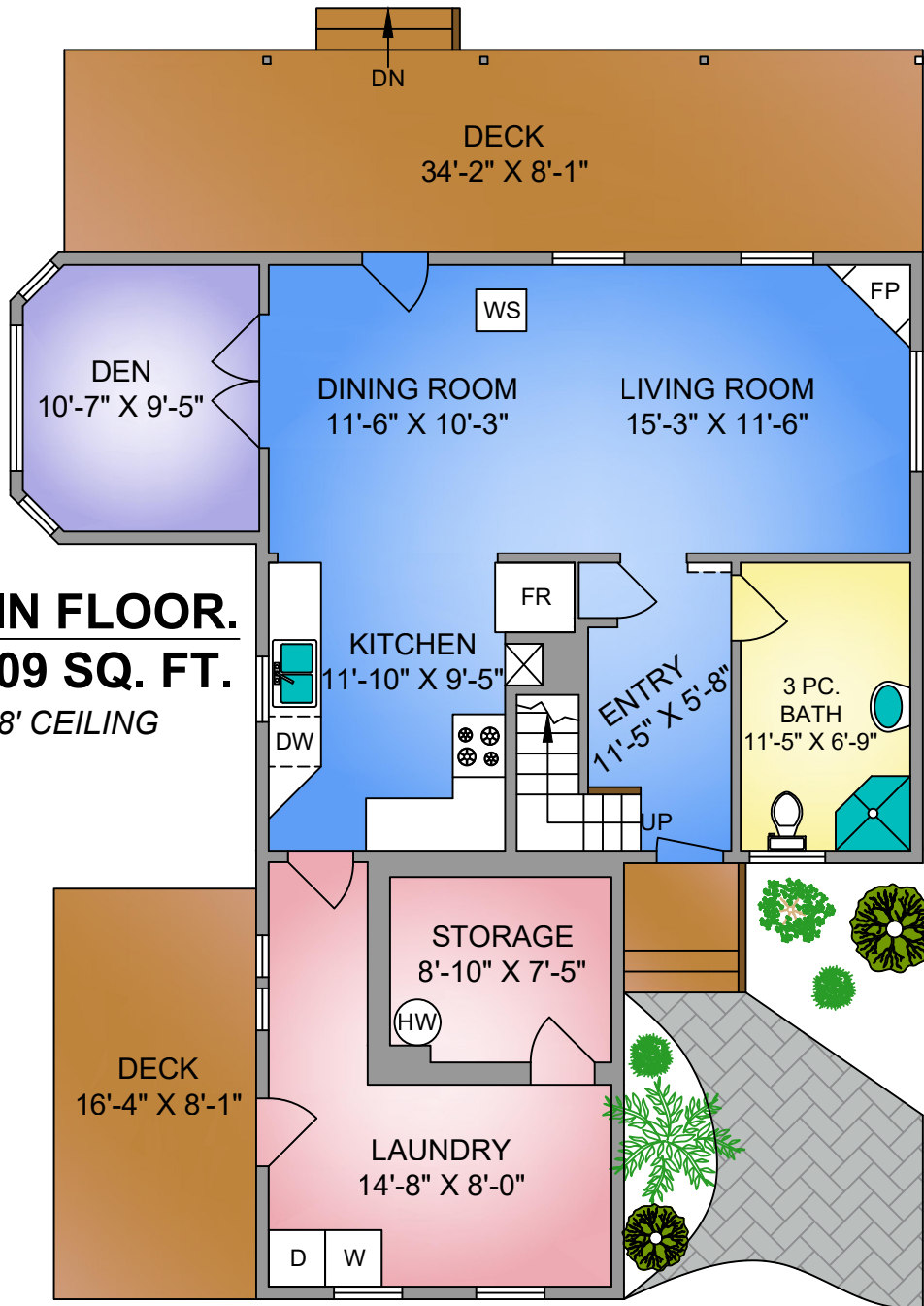


4356 CAMCO ROAD

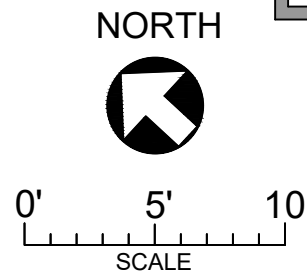
1432 SQ. FT.



MAIN FLOOR. 1009 SQ. FT. 8' CEILING



UPPER FLOOR. 423 SQ. FT. 7'-5" CEILING



4356 CAMCO RD. SEPT. 13, 2022		
Prepared by PROPER MEASURE NORTH ISLAND for the exclusive use of COURTNEY & ANGLIN REAL ESTATE GROUP Plans may not be 100% accurate. Buyer must verify any critical measurement. Private resale or modification of floor plans to a third party by any individual or entity other than Proper Measure North Island is strictly prohibited		
FLOOR	AREA (SQ. FT.)	
	FINISHED SQ.FT.	DECK
MAIN	1009	406
UPPER	423	-
TOTAL	1432	406