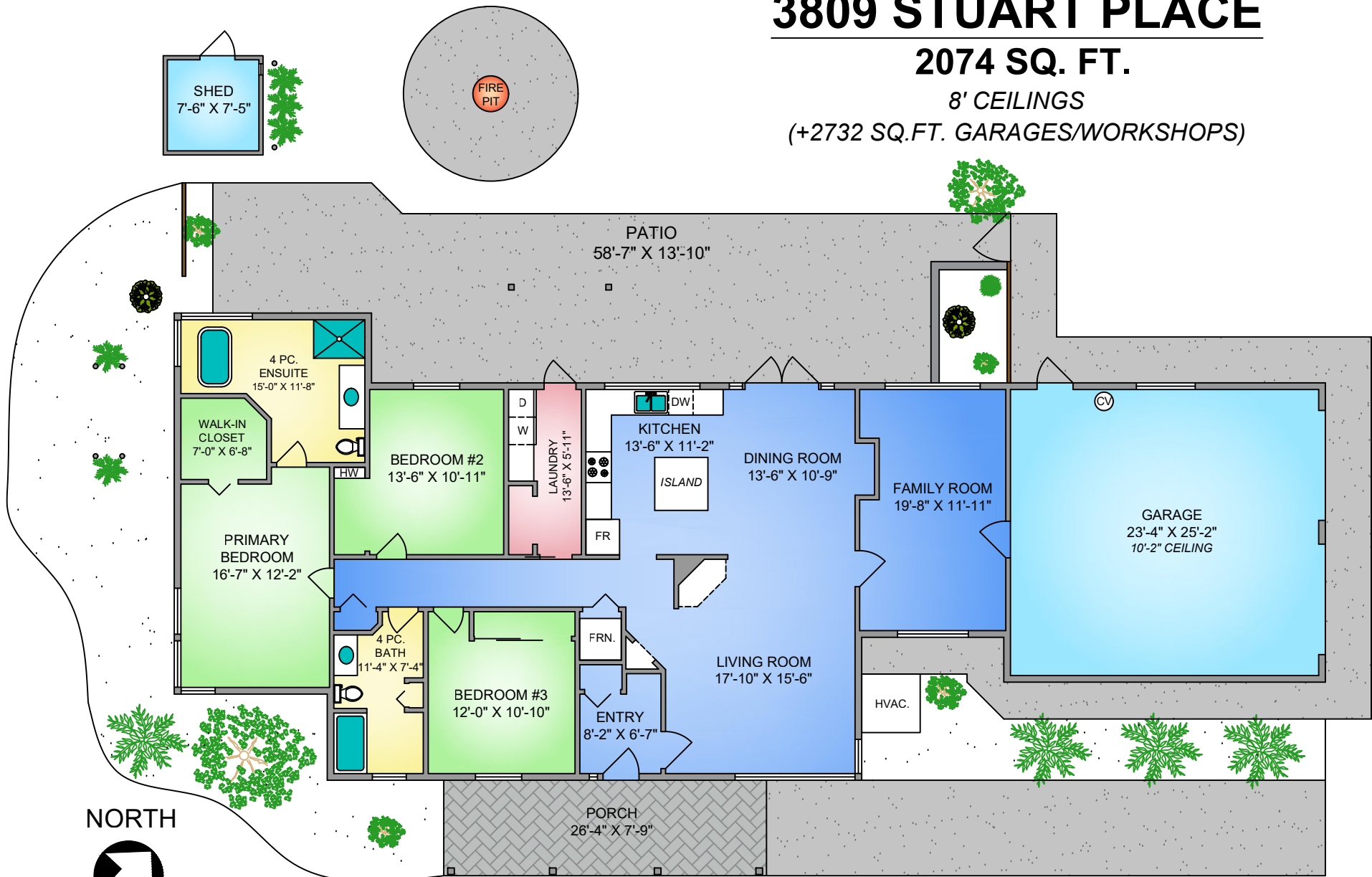


3809 STUART PLACE

2074 SQ. FT.

8' CEILINGS

(+2732 SQ.FT. GARAGES/WORKSHOPS)



NORTH



0' 5' 10'
SCALE



3809 STUART PL.

JUNE 07, 2022

Prepared by PROPER MEASURE NORTH ISLAND for the exclusive use of COURTNEY & ANGLIN REAL ESTATE GROUP
Plans may not be 100% accurate. Buyer must verify any critical measurement.

Private resale or modification of floor plans to a third party by any individual or entity other than Proper Measure North Island is strictly prohibited

FLOOR	AREA (SQ. FT.)		
	FINISHED SQ.FT.	PATIO	GARAGE/WORKSHOP
MAIN	2074	976	2732
TOTAL	2074	976	2732



250-465-1487

Proper Measure North Island

NorthIsland@Propermeasure.com