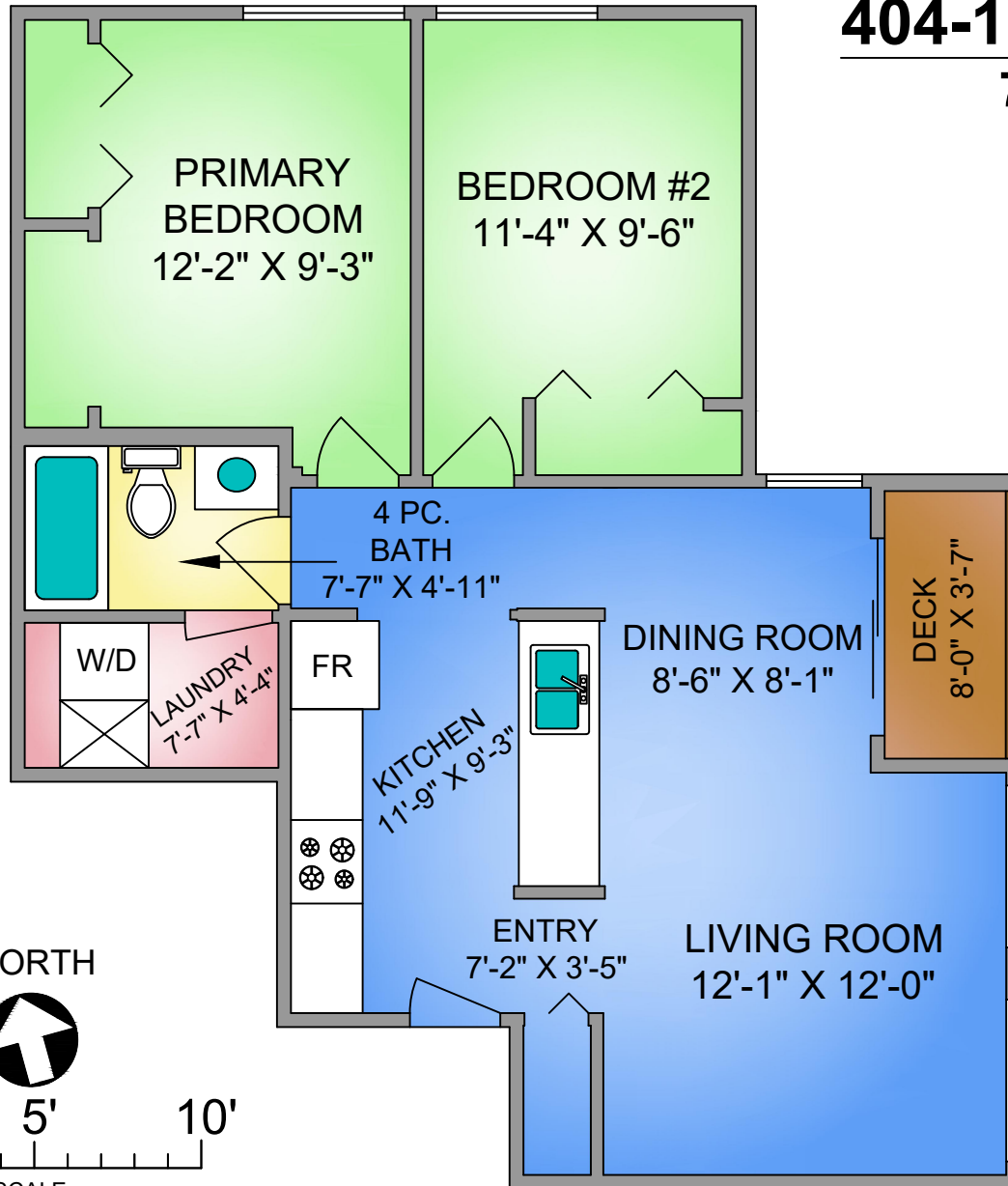


404-1111 EDGETT ROAD.

773 SQ. FT. STRATA



| 404-1111 EDGETT ROAD. | | |
|--|----------------|------|
| JAN 14, 2022 | | |
| Prepared by PROPER MEASURE NORTH ISLAND for the exclusive use of COURTNEY & ANGLIN REAL ESTATE GROUP | | |
| Plans may not be 100% accurate. Buyer must verify any critical measurement. | | |
| Private resale or modification of floor plans to a third party by any individual or entity other than Proper Measure North Island is strictly prohibited | | |
| FLOOR | AREA (SQ. FT.) | |
| | STRATA SQ.FT. | DECK |
| MAIN | 773 | 32 |
| TOTAL | 773 | 32 |