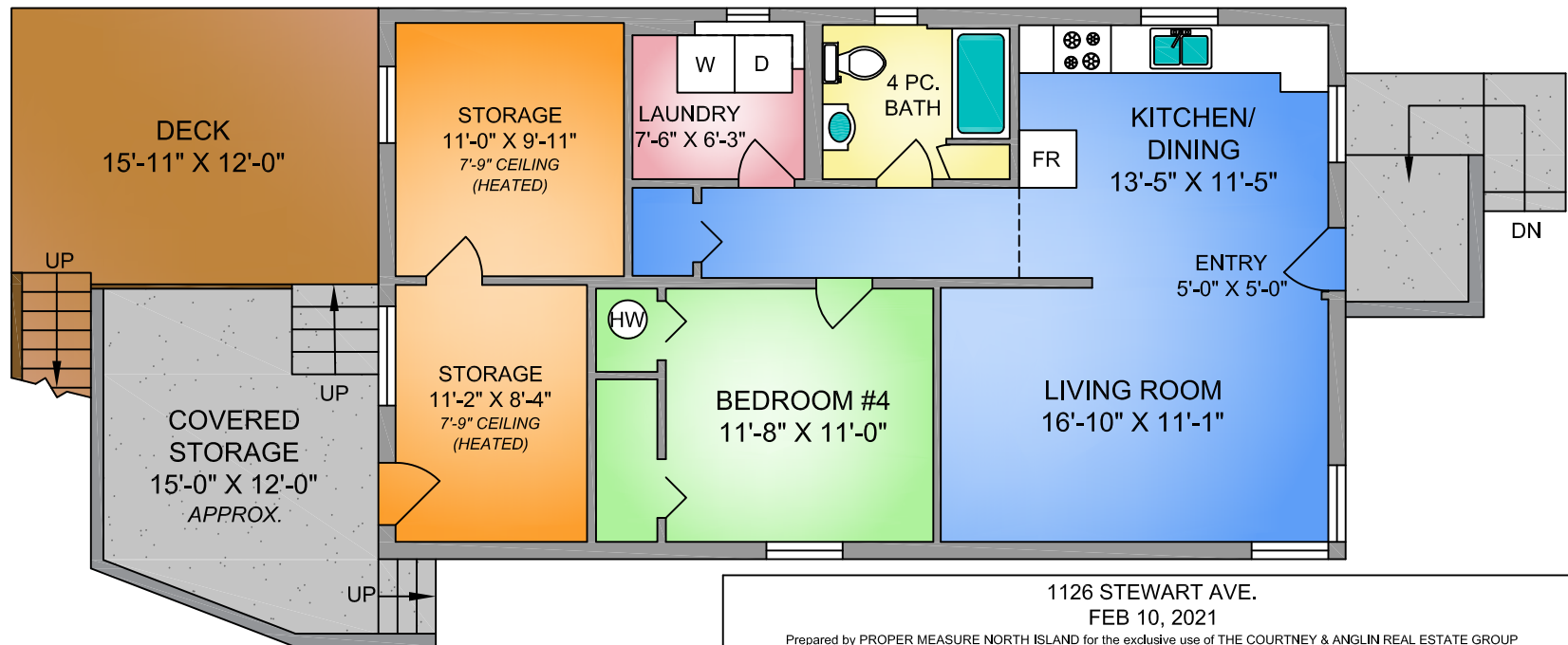
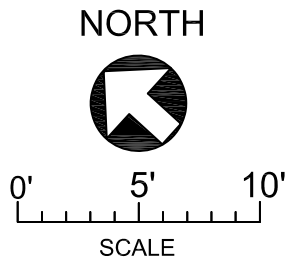
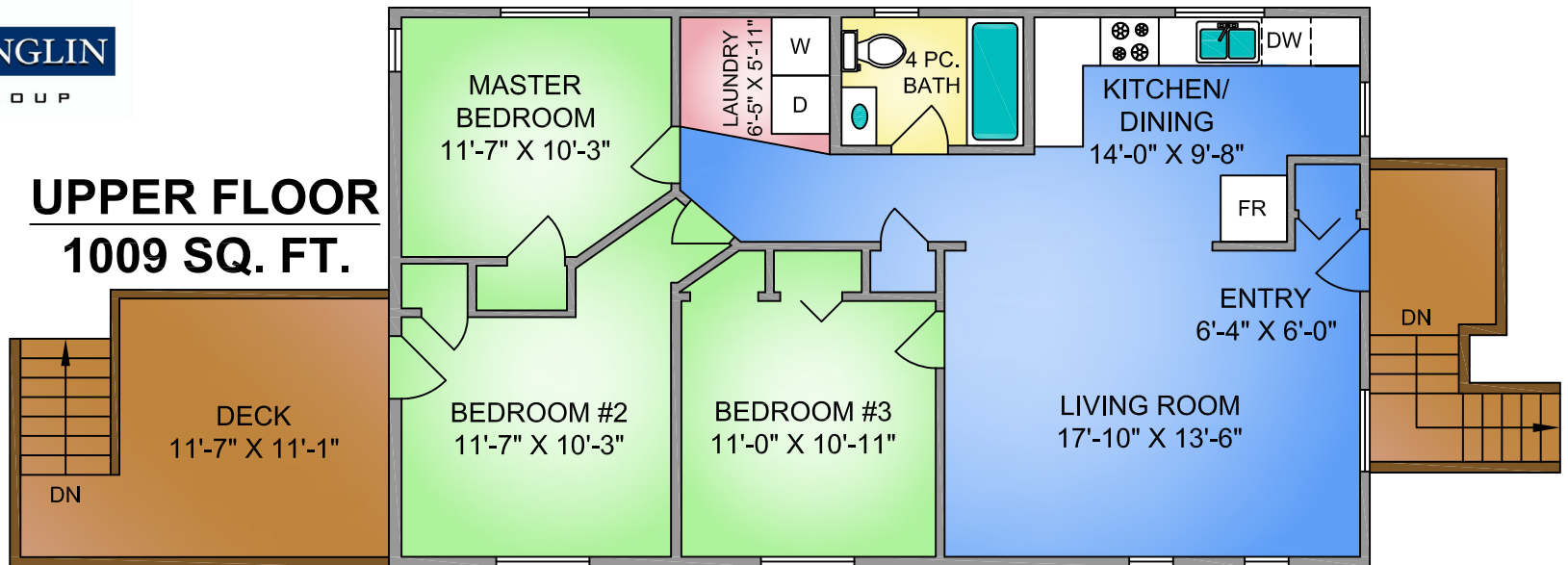


## UPPER FLOOR 1009 SQ. FT.



## LOWER FLOOR 772 SQ. FT.

(+237 SQ.FT. STORAGE)  
7'-6" - 7'-9" CEILING HEIGHT

1126 STEWART AVE.  
FEB 10, 2021

Prepared by PROPER MEASURE NORTH ISLAND for the exclusive use of THE COURTNEY & ANGLIN REAL ESTATE GROUP  
Plans may not be 100% accurate. Buyer must verify any critical measurement.  
Private resale or modification of floor plans to a third party by any individual or entity other than Proper Measure North Island is strictly prohibited

FLOOR	AREA (SQ. FT.)		
	FINISHED	HEATED STORAGE	DECK
UPPER	1009	-	203
LOWER	772	237	192
SUB-TOTAL	1781	237	-
TOTAL	2018		395