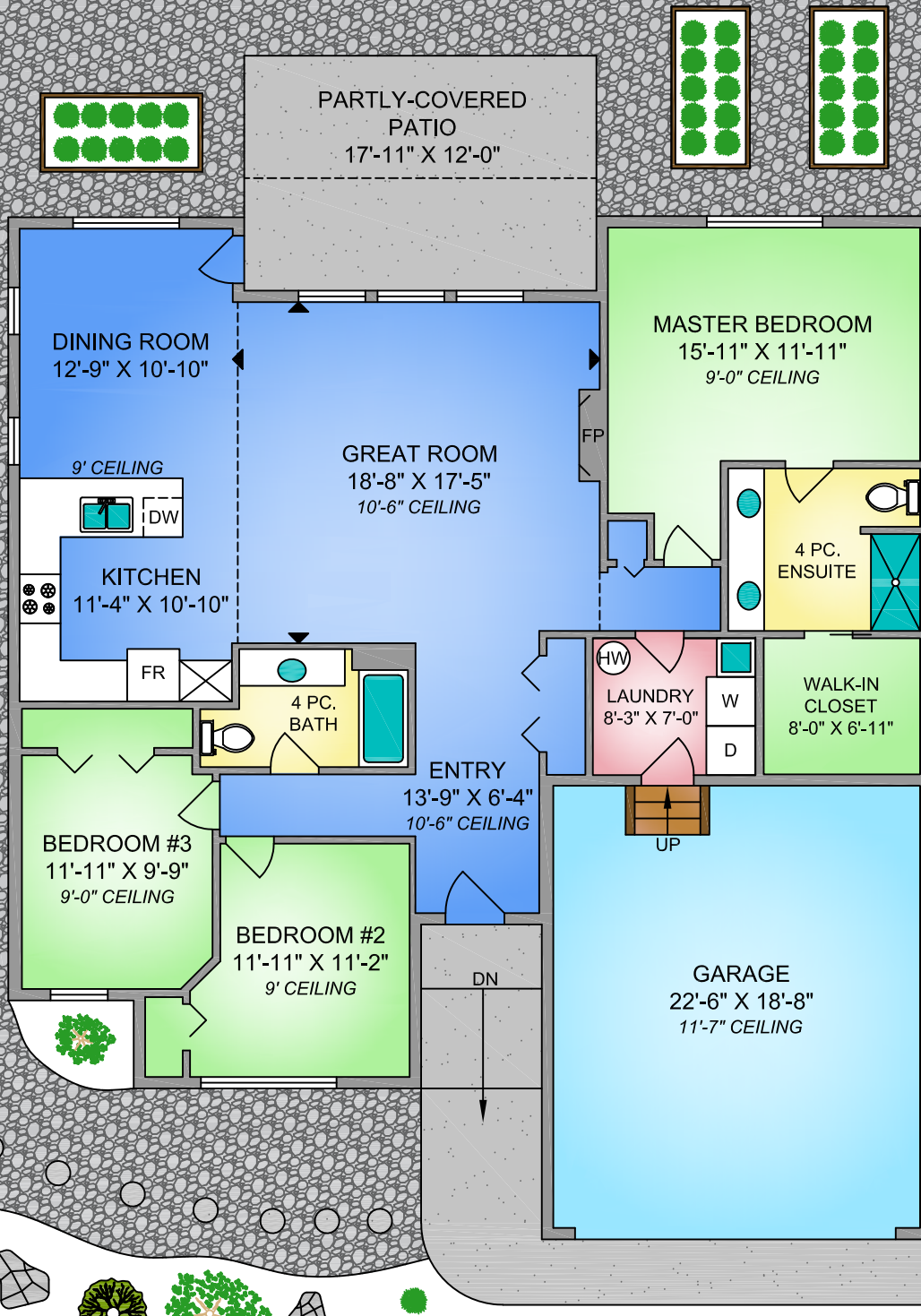
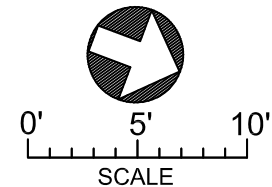


**3363 SOLPORT ST.**  
**1642 SQ. FT.**  
**(+455 SQ.FT. GARAGE)**  
**CEILING HEIGHT VARIES**



NORTH



3363 SOLPORT ST.  
JAN 13, 2021

Prepared by PROPER MEASURE NORTH ISLAND for the exclusive use of THE COURTNEY & ANGLIN REAL ESTATE GROUP  
Plans may not be 100% accurate. Buyer must verify any critical measurement.  
Private resale or modification of floor plans to a third party by any individual or entity other than Proper Measure North Island is strictly prohibited.

FLOOR	AREA (SQ. FT.)		
	FINISHED	GARAGE	PATIO
MAIN	1642	455	215
TOTAL	1642	455	215