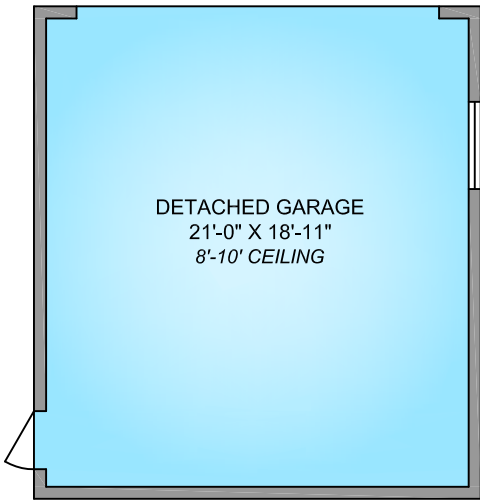
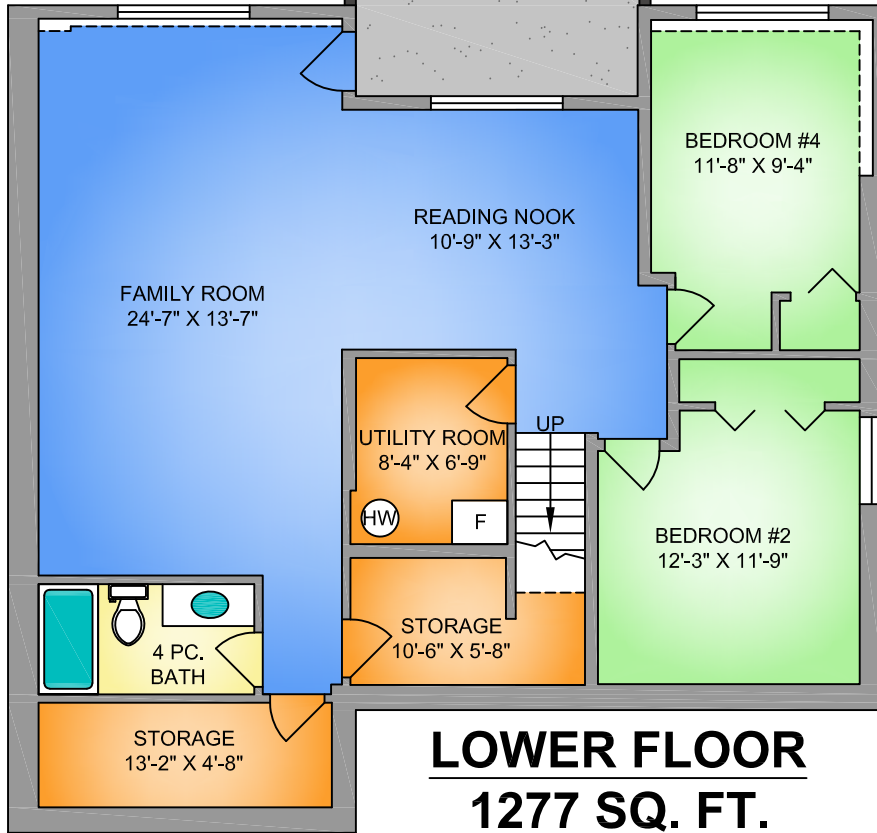
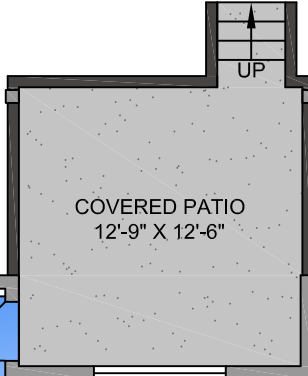
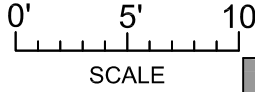


DETACHED GARAGE 442 SQ. FT.

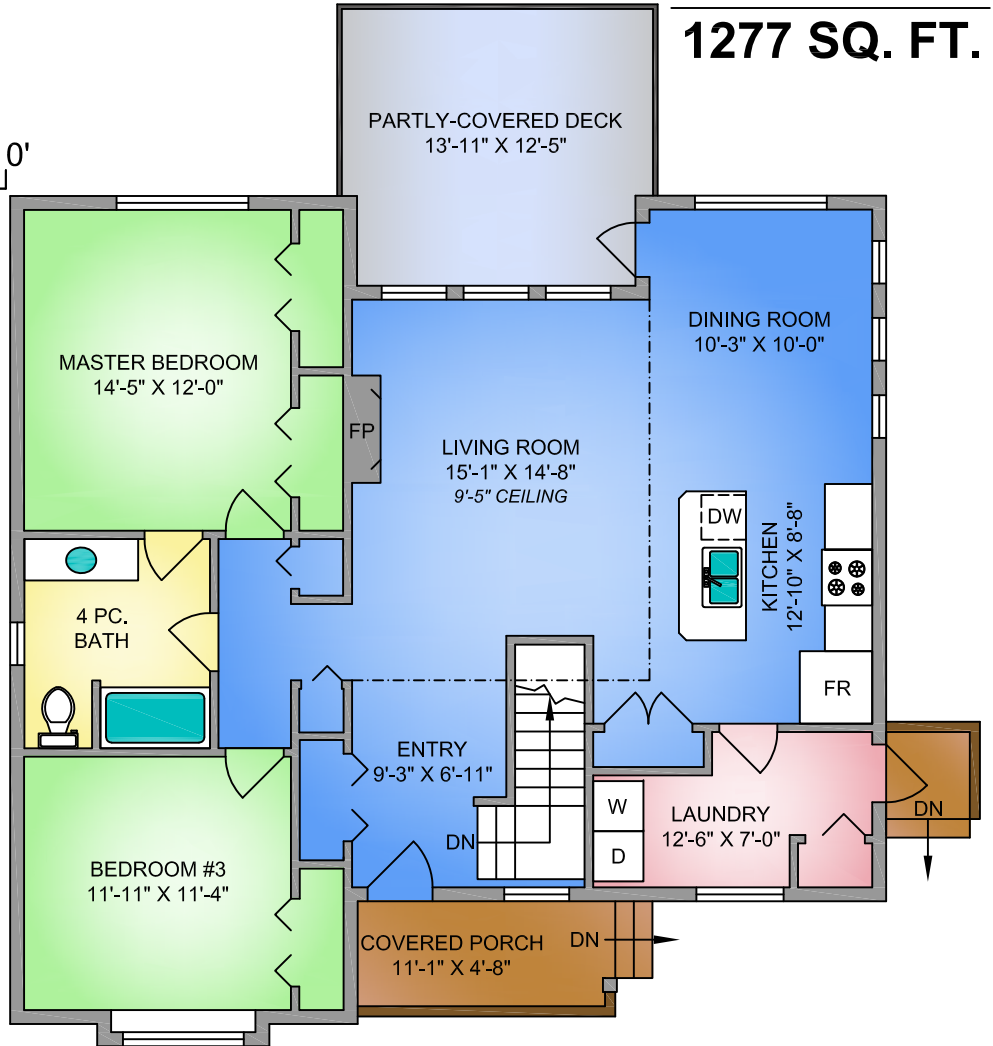
MAIN FLOOR 1277 SQ. FT.



NORTH



LOWER FLOOR 1277 SQ. FT.



2098 ARDEN RD.
MAY 28, 2020

Prepared by PROPER MEASURE NORTH ISLAND for the exclusive use of COURTNEY & ANGLIN REAL ESTATE GROUP
Plans may not be 100% accurate. Buyer must verify any critical measurement.
Private resale or modification of floor plans to a third party by any individual or entity other than Proper Measure North Island is strictly prohibited.

FLOOR	AREA (SQ. FT.)		
	FINISHED	GARAGE/WORKSHOP	DECK / PATIO
MAIN	1277	-	234
LOWER	1277	442	159
TOTAL	2554	442	393