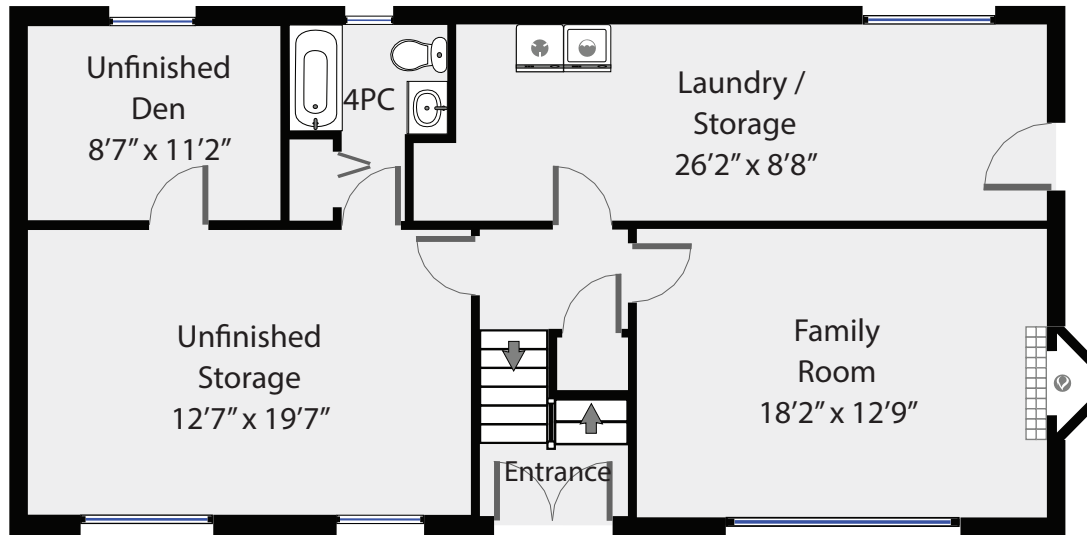


Main Floor 1,170 SQFT



Ground Floor Total 1,058 SQFT

395 Rodello

Total Square Footage 2,228 SQFT

Total Finished Square Footage 1,567 SQFT



PREPARED FOR
COURTNEY & ANGLIN

REAL ESTATE GROUP



PREPARED FOR EXCLUSIVE USE OF MICHELE COURTNEY & BILL ANGLIN
MEASUREMENTS ON PLANS ARE INTENDED FOR VISUAL
REFERENCE ONLY AND SHOULD BE VERIFIED.
ALL AREA SQFT TOTALS ARE INCLUSIVE OF EXTERIOR WALLS.
ALL INTERIOR DIMENSIONS ARE FROM INTERIOR WALLS.