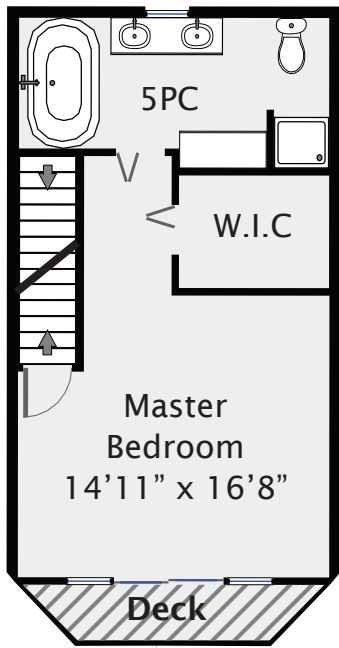
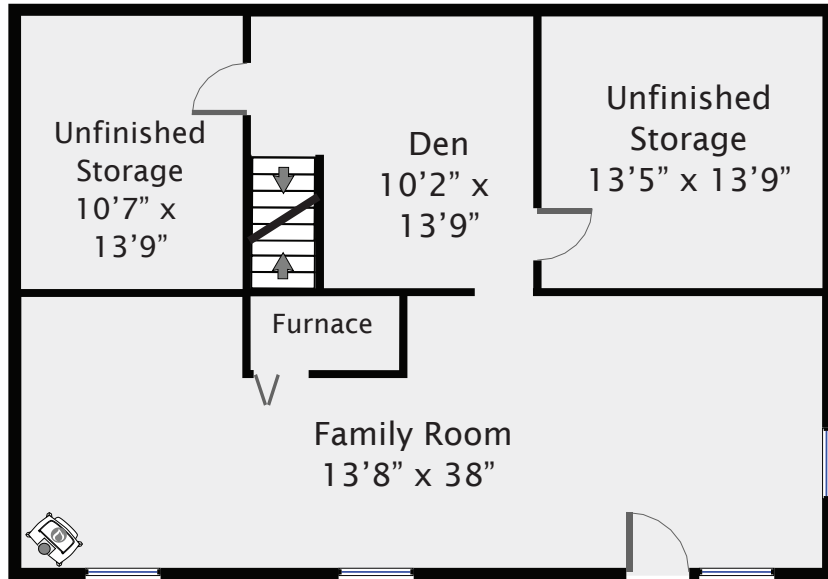


2238 Seabank Road

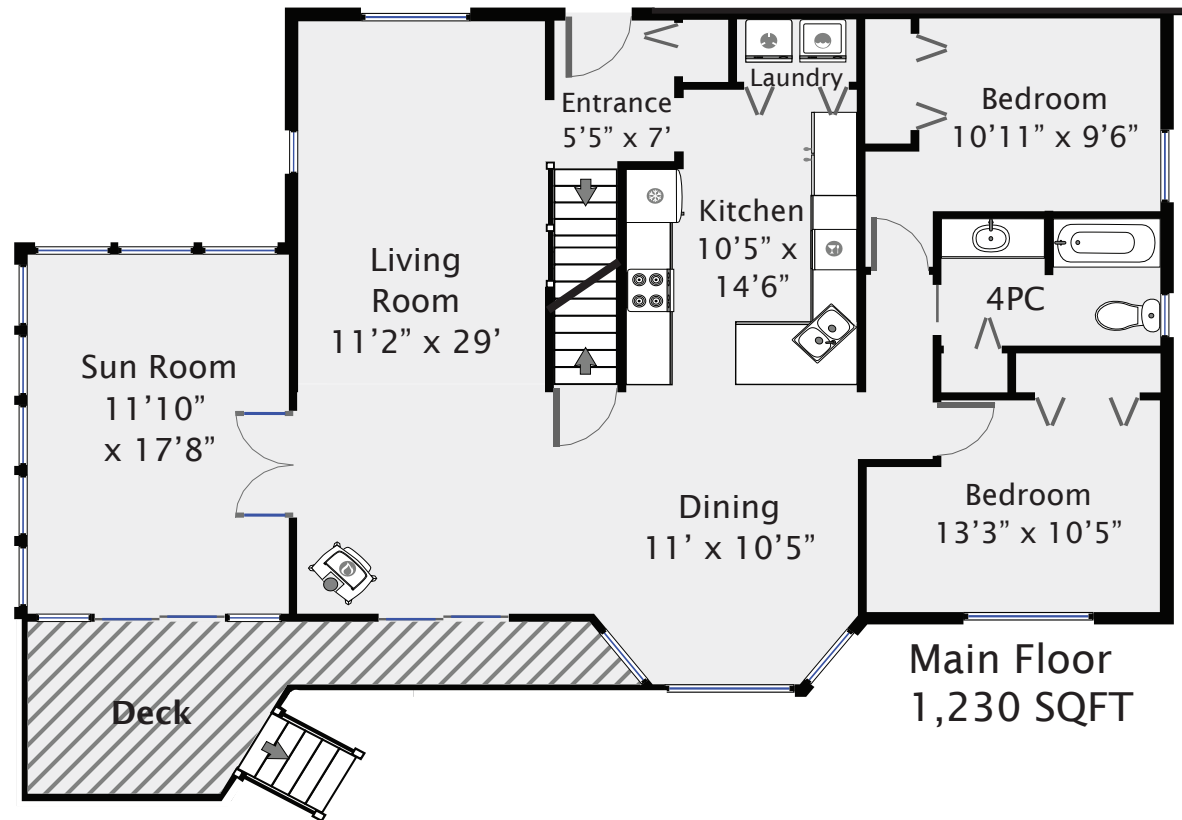
TOTAL SQUARE FOOTAGE 2,970 SQFT
TOTAL FINISHED SQUARE
FOOTAGE 2,595 SQFT



Upper Floor
540 SQFT



Ground Floor Total 1,200 SQFT



Main Floor
1,230 SQFT

RE/MAX[®]
PREPARED FOR

COURTNEY & ANGLIN

REAL ESTATE GROUP



Swift Floor Plans
250-218-5671

PREPARED FOR EXCLUSIVE USE OF MICHELE COURTNEY & BILL ANGLIN
MEASUREMENTS ON PLANS ARE INTENDED FOR VISUAL
REFERENCE ONLY AND SHOULD BE VERIFIED.
ALL AREA SQFT TOTALS ARE INCLUSIVE OF EXTERIOR WALLS.
ALL INTERIOR DIMENSIONS ARE FROM INTERIOR WALLS.