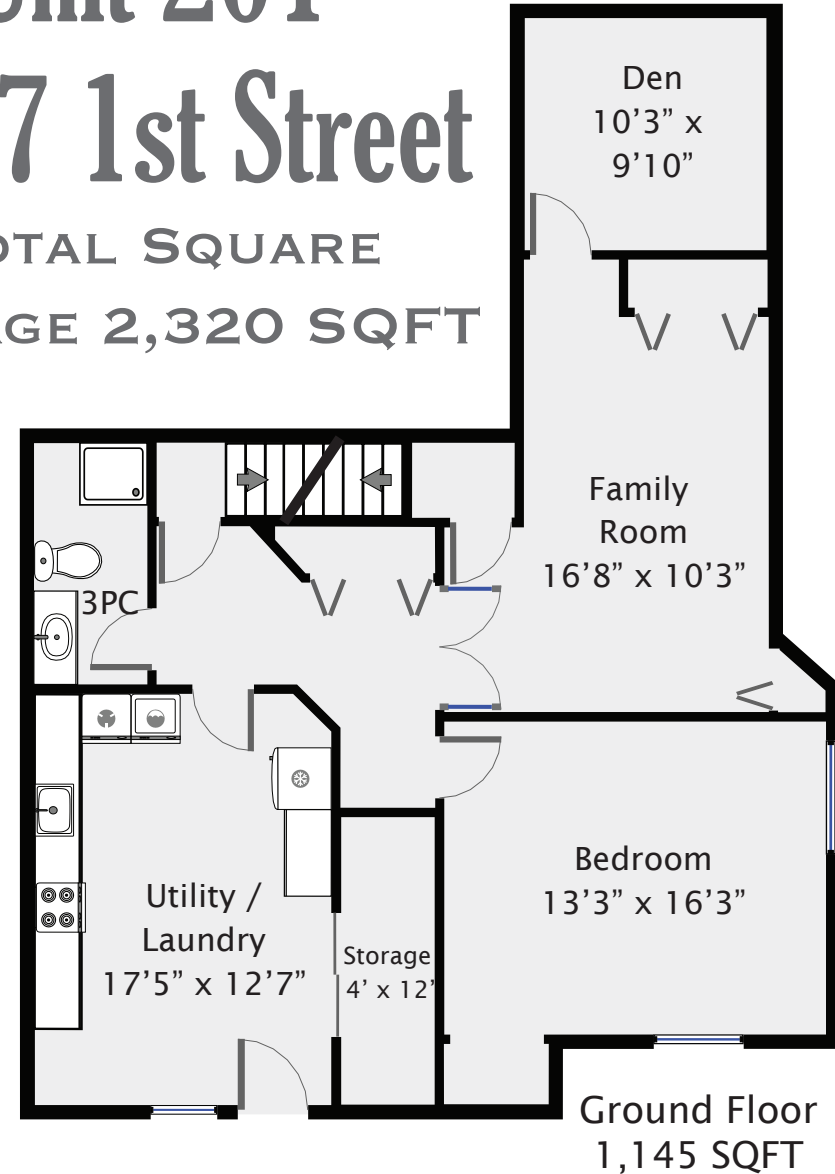
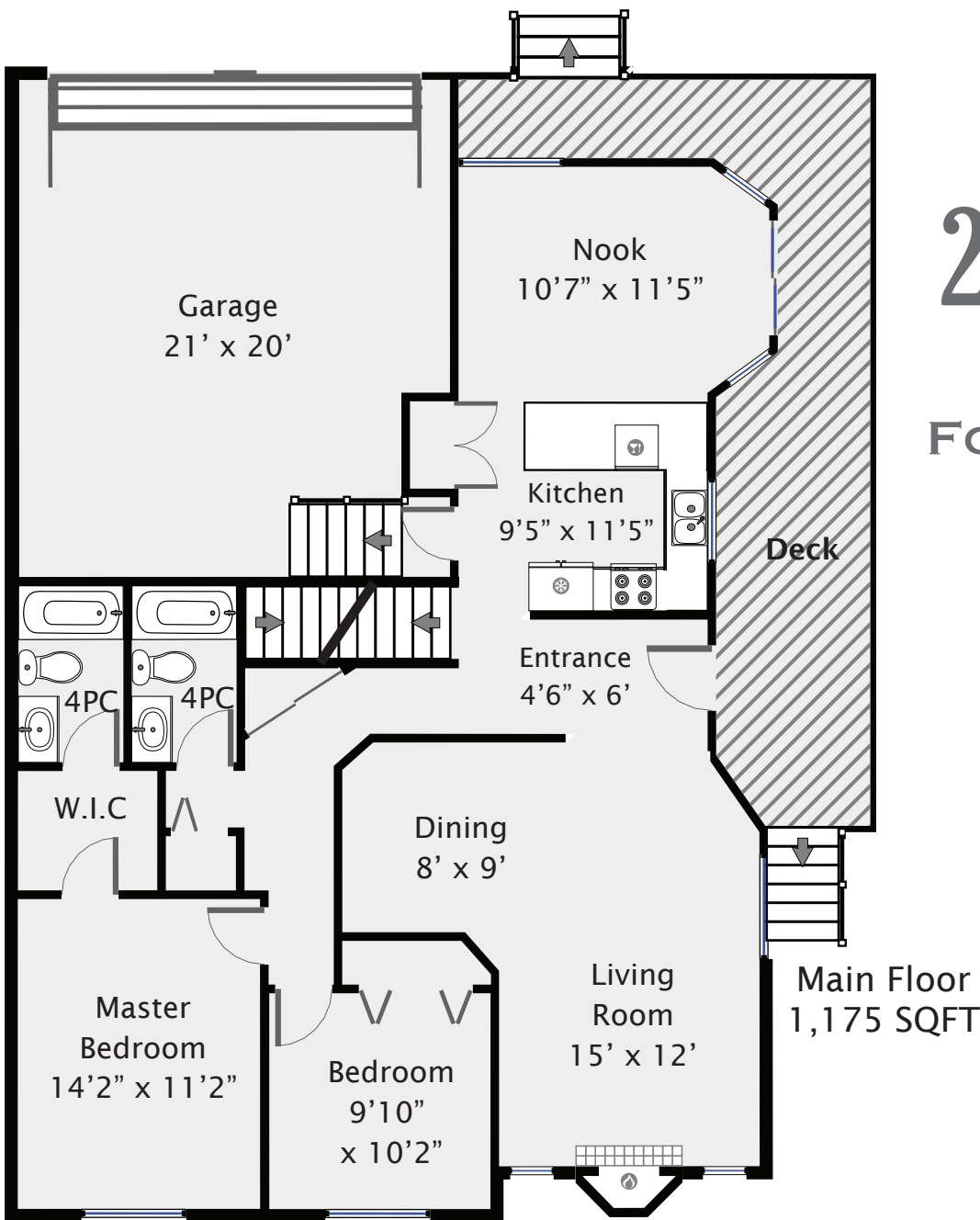


# Unit 201

## 2727 1st Street

TOTAL SQUARE  
FOOTAGE 2,320 SQFT



**RE/MAX**  
PREPARED FOR

**COURTNEY & ANGLIN**

REAL ESTATE GROUP

**Swift Floor Plans**  
250-218-5671

PREPARED FOR EXCLUSIVE USE OF MICHELE COURTNEY & BILL ANGLIN  
MEASUREMENTS ON PLANS ARE INTENDED FOR VISUAL  
REFERENCE ONLY AND SHOULD BE VERIFIED.  
ALL AREA SQFT TOTALS ARE INCLUSIVE OF EXTERIOR WALLS.  
ALL INTERIOR DIMENSIONS ARE FROM INTERIOR WALLS.